

# Europa Ultra CTO™

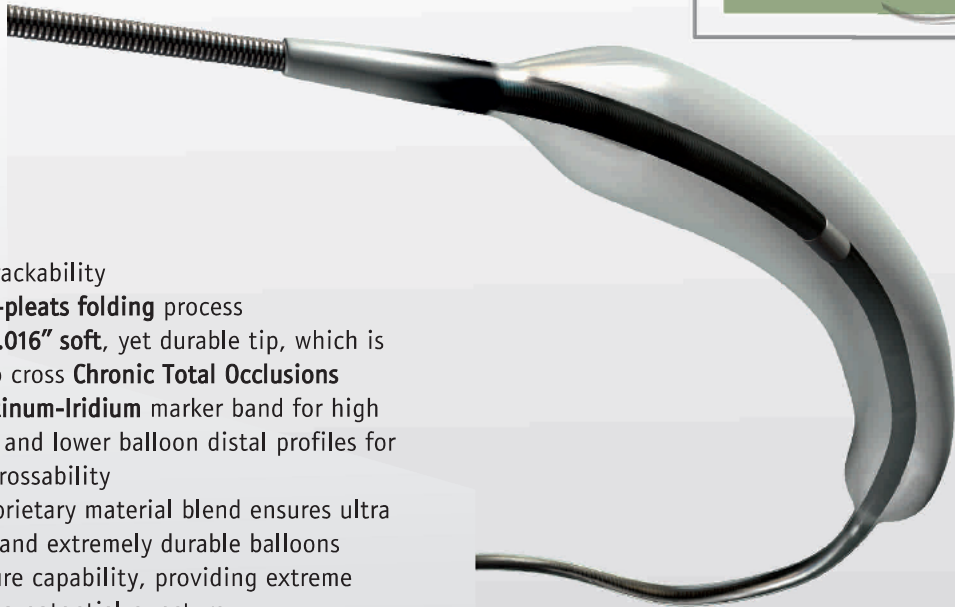
Chronic Total Occlusion Balloon Catheter

NEW Diameter 1.00mm & Catheter type OTW

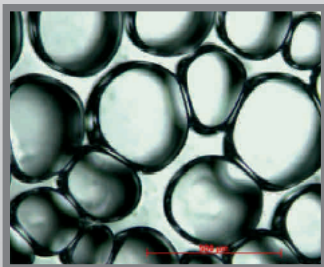
*“Lowest profiles with improved pushability for even the most challenging cases”*

Interventional  
Cardiology

Balloon  
Catheters



- Improved trackability
- Improved **2-pleats folding** process
- **Ultra-low 0.016"** soft, yet durable tip, which is designed to cross **Chronic Total Occlusions**
- **Central Platinum-Iridium** marker band for high radiopacity and lower balloon distal profiles for enhanced crossability
- Rontis' proprietary material blend ensures ultra low profile and extremely durable balloons
- High pressure capability, providing extreme resistance to potential puncture
- Average burst pressure: 26 bar
- Homeogeneous expansion throughout the entire balloon length
- Rontis' proprietary hydrophilic coating HiFlow for smoother navigation through the most challenging vasculature
- Low profile shaft, ensuring more penetration power
- Fully integrated hypotube-shaft transition optimizes pushability



## Technical Data

### Europa Ultra CTO™ Chronic Total Occlusion Balloon Catheter

Mode of exchange:	Rx / OTW
Balloon material/characteristic:	modified polyamide / semi - compliant
Radiopaque markers:	1, Platinum - Iridium
Guiding Catheter compatibility (min):	5F
Usable Catheter Length:	140 cm
Distal shaft (Rx):	2.4F
Double lumen shaft (OTW):	2.6F
Hypotube:	2.0F
Guidewire compatibility (max):	0.014"
Nominal pressure:	8 bar
Rated Burst Pressure:	18 bar
<b>Average Burst Pressure:</b>	<b>28 bar</b>
Coating:	Hydrophilic, HiFlow
Total shelf life:	4 years

## Ordering Information

Code (Rx)	Balloon Diameter (mm)	Balloon Length (mm)	Code (OTW)
EC10/08	1.00	8	E010/08
EC10/12		12	E010/12
EC10/16		16	E010/16
EC10/20		20	E010/20
EC12/10	1.25	10	E012/10
EC12/15		15	E012/15
EC12/20		20	E012/20
EC15/10	1.50	10	E015/10
EC15/15		15	E015/15
EC15/20		20	E015/20

1 French (Fr)=0.33 mm 1 inch = 25.45 mm 1 bar = 100 kPascal 0.987 Atm = 14.505 psi

