

# Abrax™

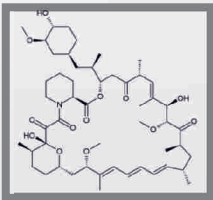
Sirolimus - Eluting Biodegradable Polymer  
Coronary Stent System  
“DES Re-discovered”

Interventional  
Cardiology

Drug-Eluting  
Stents

## Sirolimus

- Suppresses neointimal growth without suppressing endothelialization
- Reduces in-stent restenosis
- Drug load  $2.0\mu\text{g}/\text{mm}^2$



## Biodegradable polymer

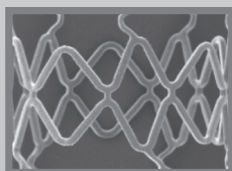
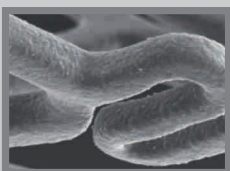
- PLGA
- Uniform and site-specific drug delivery
- Thin layer  $5\mu\text{m}$
- Complete degradation following the drug release into 6 weeks
- Eliminating inflammation and stent thrombosis

## Stent platform

- Carbon C' implanted surface for higher biocompatibility and reduced restenosis rate
- Intra-cellular “sinusoidal links”
- Open cell design ensures balance of radial strength and flexibility
- Enhanced radiopacity
- Optimal scaffolding as well as stent-to-wall apposition with superior acute gain

## Balloon catheter platform

- Lower inflation pressures
- Homogenizes stent expansion
- Hydrophilicity lowers friction optimizing deliverability



## Abrax™ Clinical Study

- Klinik für Herz und Kreislauferkrankungen, Munich (Germany)
- 224 patients

2-vessel disease	28.0% of patients
3-vessel disease	57.0% of patients
Complex lesions	69.0%
Diabetes	30.0%
Death or M.I.	4.5%
TLR	6.7%
MACE	11.2%
URGENT TVR	0%
Stent thrombosis	0%

## Technical Data

### Abrax™ Sirolimus - Eluting Biodegradable Polymer Coronary Stent System

Mode of exchange:	Rx
Balloon material / characteristic:	modified polyamide / semi-compliant
Guidewire compatibility (max):	0.014"
Usable Catheter length:	142 cm
Guiding Catheter compatibility (min):	5F
Nominal Pressure:	9 bar
Rated Burst Pressure:	16-18 bar
Coating:	Hydrophilic, HiFlow
Entry profile:	0.016"

#### Stent Specifications

Material:	Carbonized SS alloy
Strut thickness:	110 µm (average)
Metal / Artery Ratio:	13-15%

#### Polymer/Drug Specifications

Drug carrier polymer:	Biodegradable
Polymer Elution period:	6 weeks
Polymer thickness:	ca. 5 µm <sup>2</sup>
Drug:	Sirolimus

## Ordering Information

Balloon Diameter	Stent Length						
	10	14	18	24	28	34	38
2.00	AB20/10	AB20/14	AB20/18	AB20/24	AB20/28	AB20/34	AB20/38
2.25	AB22/10	AB22/14	AB22/18	AB22/24	AB22/28	AB22/34	AB22/38
2.50	AB25/10	AB25/14	AB25/18	AB25/24	AB25/28	AB25/34	AB25/38
2.75	AB27/10	AB27/14	AB27/18	AB27/24	AB27/28	AB27/34	AB27/38
3.00	AB30/10	AB30/14	AB30/18	AB30/24	AB30/28	AB30/34	AB30/38
3.25	AB32/10	AB32/14	AB32/18	AB32/24	AB32/28	AB32/34	AB32/38
3.50	AB35/10	AB35/14	AB35/18	AB35/24	AB35/28	AB35/34	AB35/38
4.00	AB40/10	AB40/14	AB40/18	AB40/24	AB40/28	AB40/34	AB40/38

1 French (Fr)=0.33 mm 1 inch = 25.45 mm 1 bar = 100 kPascal 0.987 Atm = 14.505 psi

